

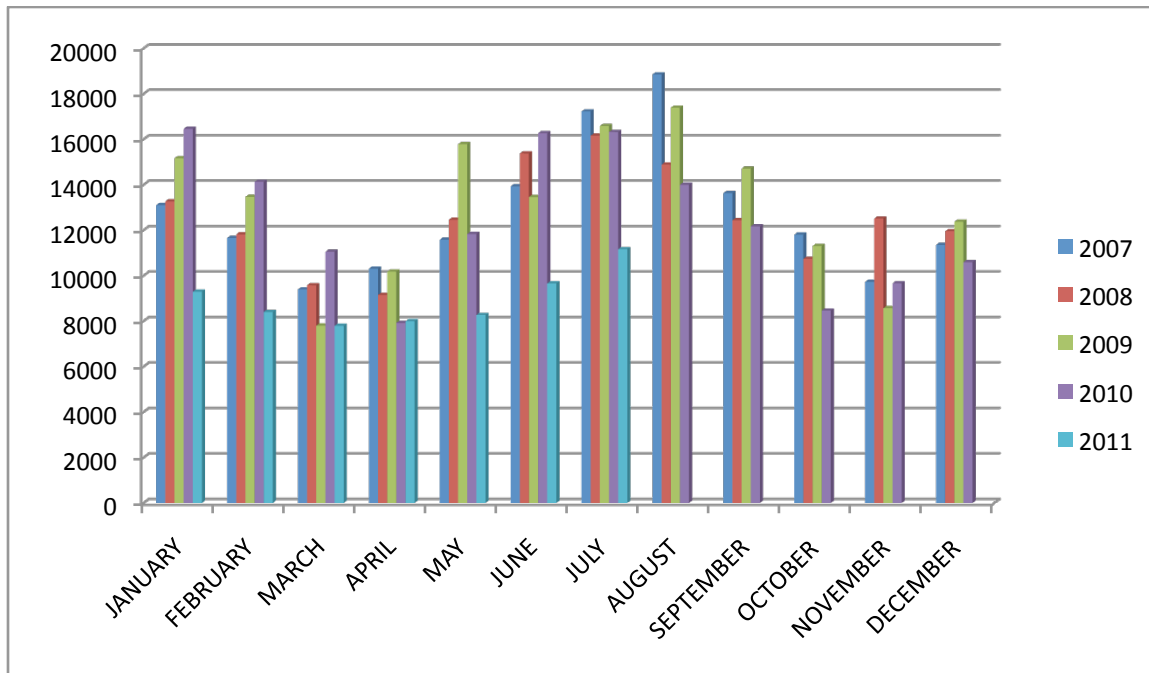
KILOWATT-HOUR USAGE PER MONTH 2007-2011

**AND % INCREASE (+) OR DECREASE (-) FROM SAME MONTH IN 2008
IN 2010**

CITY HALL

	2007	2008	2009	2010	2011
JANUARY	13102	13265	15163	16455	9291
FEBRUARY	11654	11814	13467	14127	8399
MARCH	9393	9574	7803	11048	7789
APRIL	10303	9150	10177	7918	7994
MAY	11581	12459	15783	11833	8267
JUNE	13929	15374	13455	16267	9656
JULY	17223	16159	16580	16317	11163
AUGUST	18848	14884	17385	13996	
SEPTEMBER	13626	12439	14710	12170	
OCTOBER	11799	10739	11303	8460	
NOVEMBER	9723	12510	8570	9661	
DECEMBER	11349	11951	12367	10590	

Kilowatt-hours vs. Month - 2007-2011



CITY HALL

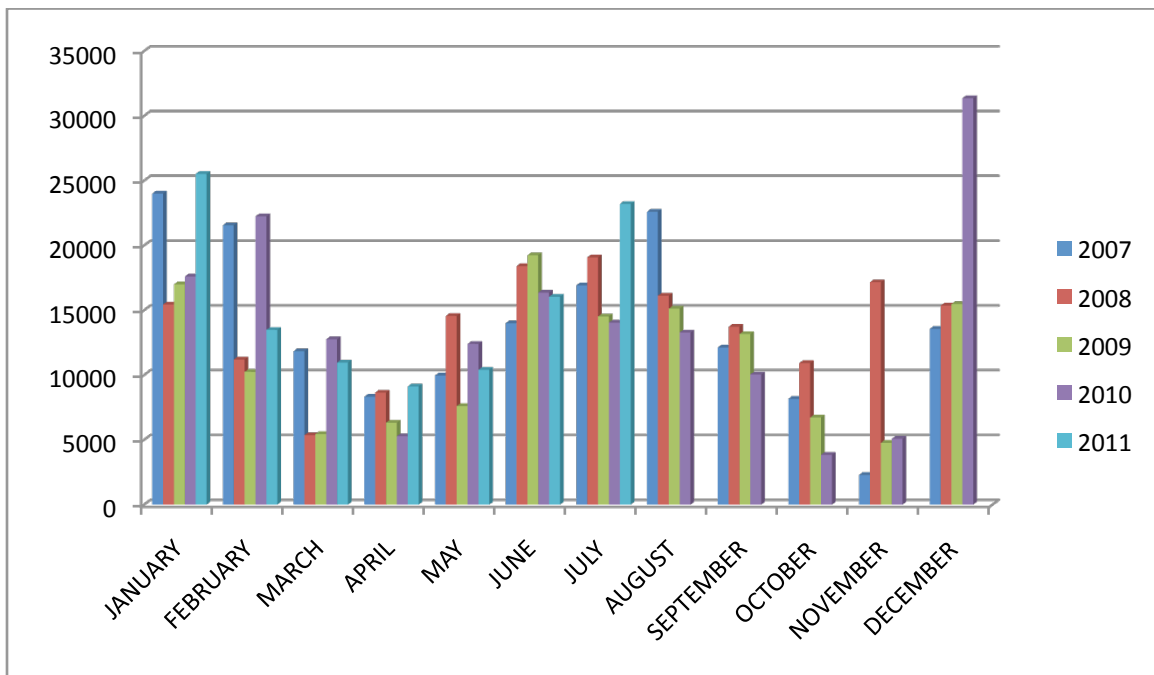
Comparison of percent usage - 2008 and 2010

	2008	2010	2011	%	%	Average % Change
JANUARY	13265	16455	9291	-29.96	-43.54	-36.75
FEBRUARY	11814	14127	8399	-28.91	-40.55	-34.73
MARCH	9574	11048	7789	-18.64	-29.50	-24.07
APRIL	9150	7918	7994	-12.63	+0.96	-5.84
MAY	12459	11833	8267	-33.65	-30.14	-31.89
JUNE	15374	16267	9656	-37.19	-40.64	-38.92
JULY	16159	16317	11163	-30.92	-31.59	-31.25
AUGUST	14884	13996				
SEPTEMBER	12439	12170				
OCTOBER	10739	8460				
NOVEMBER	12510	9661				
DECEMBER	11951	10590				

GYM

	2007	2008	2009	2010	2011
JANUARY	24000	15440	17000	17600	25520
FEBRUARY	21560	11200	10240	22240	13480
MARCH	11840	5360	5440	12760	10960
APRIL	8320	8640	6320	5280	9120
MAY	9960	14560	7600	12400	10400
JUNE	14000	18400	19240	16360	16040
JULY	16920	19080	14520	14040	23200
AUGUST	22600	16120	15120	13280	
SEPTEMBER	12120	13720	13160	10040	
OCTOBER	8160	10920	6720	3840	
NOVEMBER	2290	17160	4760	5080	
DECEMBER	13560	15360	15480	31360	

Kilowatt-hours vs. Month - 2007-2011



GYM

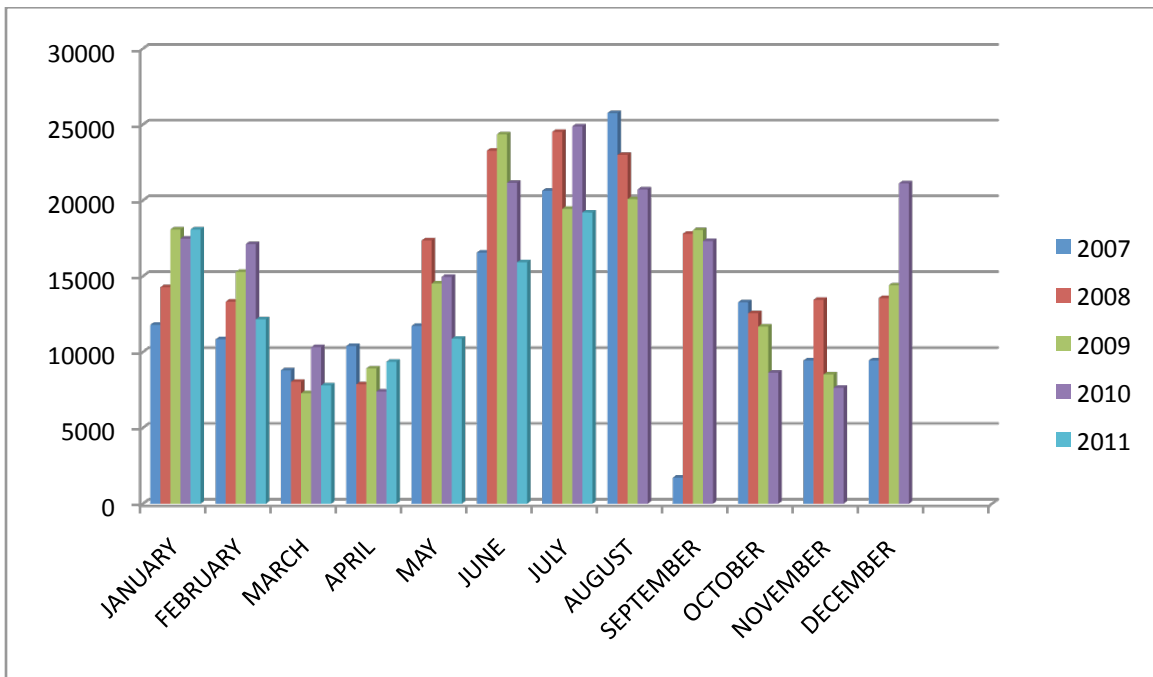
Comparison of percent usage- 2008 and 2010

	2008	2010	2011	%	%	Average % Change
JANUARY	15440	17600	25520	+64.22	+45.00	+54.61
FEBRUARY	11200	22240	13480	+20.36	-39.39	-9.51
MARCH	5360	12760	10960	+104.48	-14.11	+45.19
APRIL	8640	5280	9120	+5.56	+73.73	+39.14
MAY	14560	12400	10400	-28.57	-16.13	-22.35
JUNE	18400	16360	16040	-12.83	-1.96	-7.39
JULY	19080	14040	23200	+21.59	+65.24	+43.42
AUGUST	16120	13280				
SEPTEMBER	13720	10040				
OCTOBER	10920	3840				
NOVEMBER	17160	5080				
DECEMBER	15360	31360				

YMCA – OLD SCHOOL

	2007	2008	2009	2010	2011
JANUARY	11800	14280	18080	17480	18080
FEBRUARY	10840	13320	15280	17120	12160
MARCH	8800	8040	7280	10320	7800
APRIL	10400	7880	8920	7400	9360
MAY	11720	17360	14520	14960	10880
JUNE	16560	23280	24360	21160	15920
JULY	20640	24520	19440	24880	19200
AUGUST	25760	23000	20080	20720	
SEPTEMBER	1720	17800	18040	17320	
OCTOBER	13280	12560	11680	8640	
NOVEMBER	9440	13440	8520	7640	
DECEMBER	9440	13560	14400	21120	

Kilowatt-hours vs. Month - 2007-2011



YMCA – OLD SCHOOL

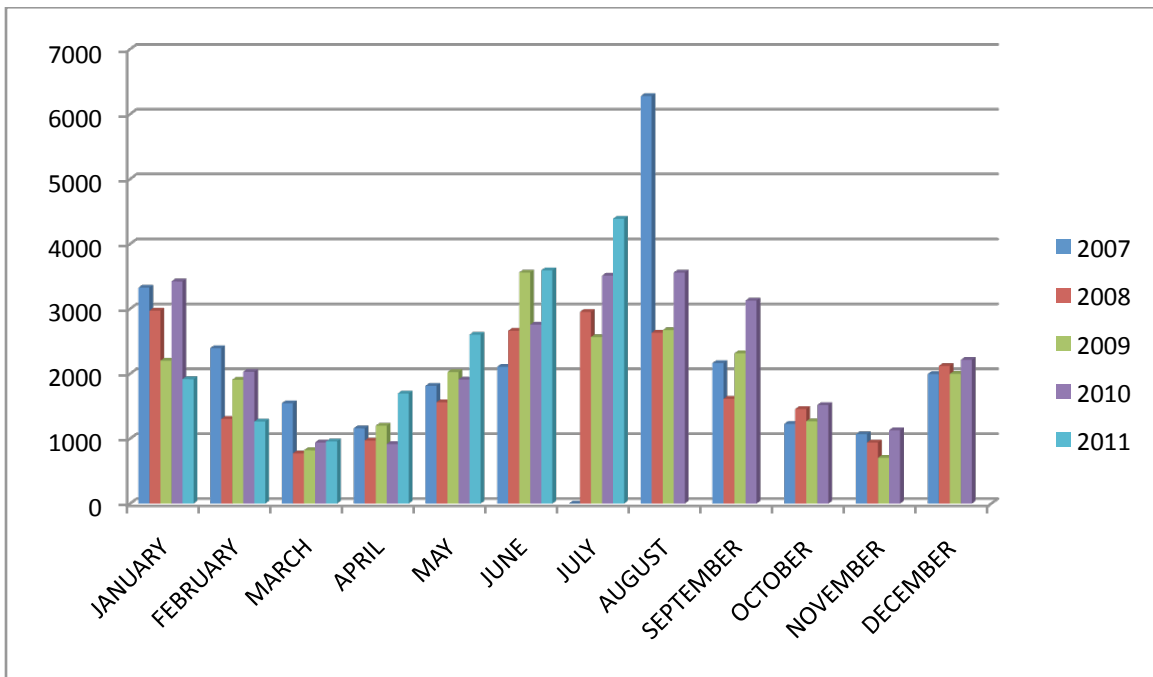
Comparison of percent usage- 2008 and 2010

	2008	2010	2011	%	%	Average % Change
JANUARY	14280	17480	18080	+26.61	+3.43	+13.03
FEBRUARY	13320	17120	12160	-8.71	-28.97	-18.84
MARCH	8040	10320	7800	-2.99	-24.42	-10.71
APRIL	7880	7400	9360	+18.78	+26.49	+22.63
MAY	17360	14960	10880	-37.33	-27.27	-32.30
JUNE	23280	21160	15920	-31.62	-24.76	-28.19
JULY	24520	24880	19200	-21.70	-22.80	-22.26
AUGUST	23000	20720				
SEPTEMBER	17800	17320				
OCTOBER	12560	8640				
NOVEMBER	13440	7640				
DECEMBER	13560	21120				

FIRE DEPARTMENT ADMINISTRATION

	2007	2008	2009	2010	2011
JANUARY	3325	2971	2202	3422	1916
FEBRUARY	2393	1303	1907	2030	1263
MARCH	1545	772	821	940	956
APRIL	1158	971	1199	918	1695
MAY	1813	1559	2026	1911	2601
JUNE	2107	2662	3560	2756	3593
JULY	0	2952	2565	3511	4388
AUGUST	6276	2633	2671	3559	
SEPTEMBER	2163	1614	2315	3127	
OCTOBER	1226	1456	1267	1518	
NOVEMBER	1069	940	704	1129	
DECEMBER	1995	2119	1997	2213	

Kilowatt-hours vs. Month - 2007-2011



FIRE DEPARTMENT ADMINISTRATION

Comparison of percent usage- 2008 and 2010

	2008	2010	2011	%	%	Average % Change
JANUARY	2971	3422	1916	-35.51	-44.01	-39.76
FEBRUARY	1303	2030	1263	-3.07	-37.78	-20.43
MARCH	772	940	956	+23.81	+1.70	+12.71
APRIL	971	918	1695	+74.56	+84.64	+79.60
MAY	1559	1911	2601	+66.84	+36.11	+51.47
JUNE	2662	2756	3593	+34.97	+30.37	+32.67
JULY	2952	3511	4388	+48.64	+24.98	+36.81
AUGUST	2633	3559				
SEPTEMBER	1614	3127				
OCTOBER	1456	1518				
NOVEMBER	940	1129				
DECEMBER	2119	2213				